

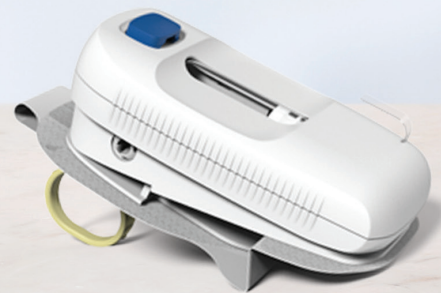
West Announces First Fill-Finish Partnership



User loaded up to 3.5mL



User loaded 3.5 - 10mL



Preloaded 3.5mL



West is enabling fill-finish as an integrated part of the SmartDose[®] drug delivery platform



swissfillon

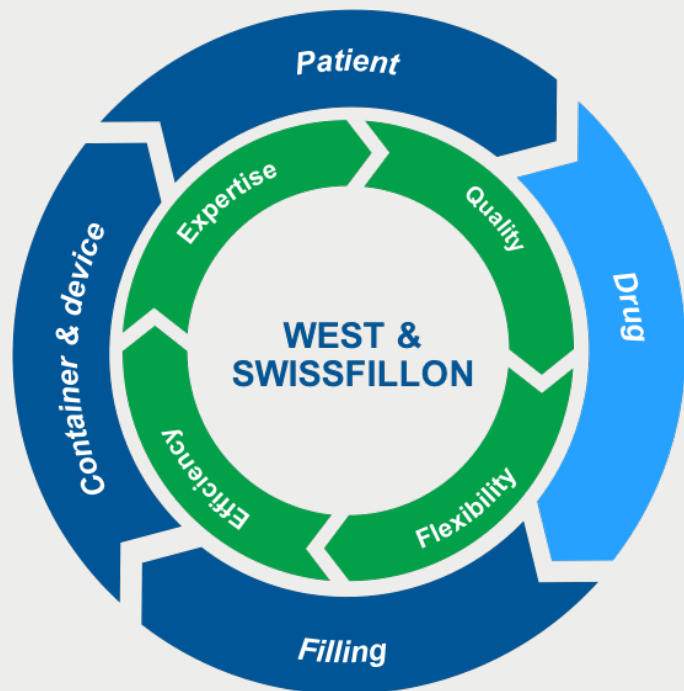


swissfillon

A Unique and Differentiated Offering

Choose Swissfillon When Time and Quality Matter

- One-stop-shop partner from **clinical to small scale commercial** supply
- **Liquid aseptic filling** with possibility of inert gas purge and overlay:
 - **Vial filling** – high precision weight dosing: 2mL to 20mL
 - **Syringe filling** – high precision weight dosing: 0.5mL to 5mL (fill .1-4mL)
 - **Cartridge** - high-precision vacuum plug setting level dosing: Up to 3mL
 - Liquid, sterile filling up to 20,000 units / batch / day
- Fully automated aseptic processing for **1-100L GMP batches**
- Approved to handle **high volume, highly viscous & high potency biologics**



Trust West and Swissfillon to help you Simplify the Journey™ from concept to patient

West Pharmaceutical Services, Inc. | 530 Herman O. West Drive, Exton, PA 19341 | www.westpharma.com

North America +1 800-345-9800 | Europe +49 2403 7960 | Asia Pacific +64 6862 3400