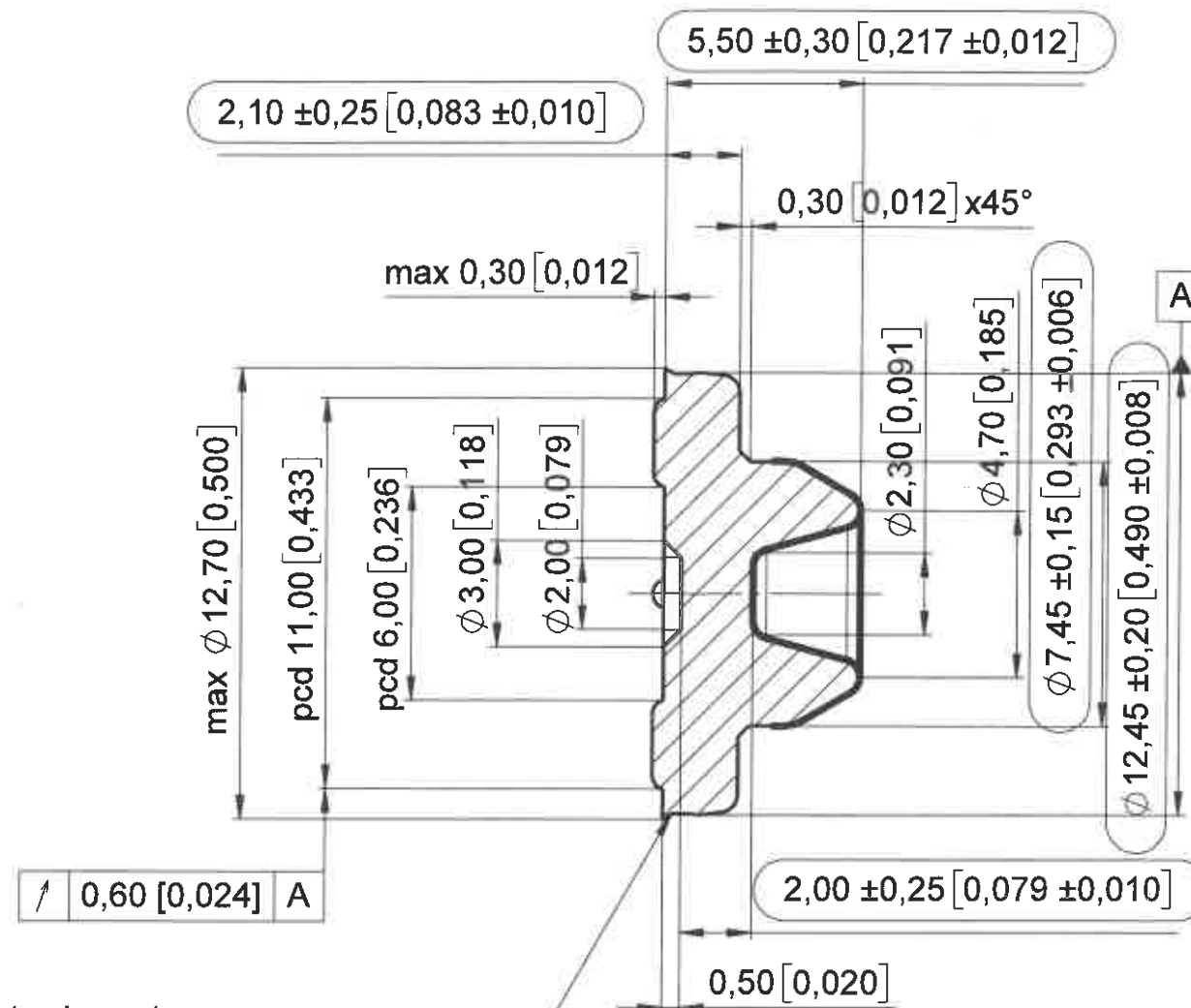
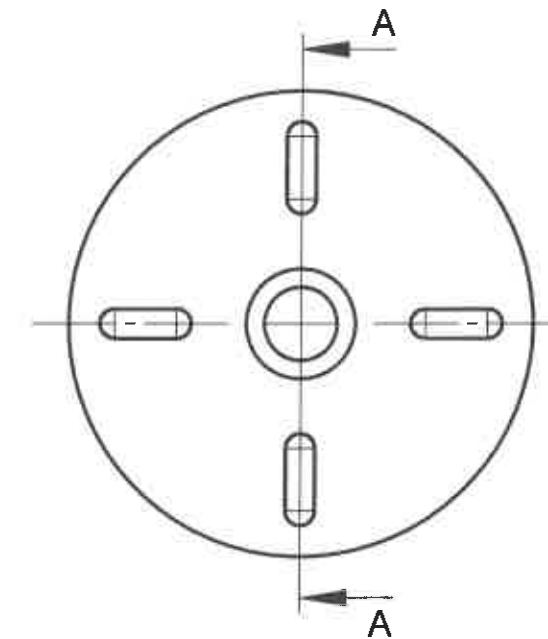


THICK LINE INDICATES FLUROTEC FILM COVERAGE



Trim may be irregular  
 Trim diameter not to exceed 0.25 [0.010]  
 over the molded diameter.

Section A-A



### Notes:

- Drawing may be not to scale
- 0.1 - 0.15 [0.004 - 0.006] radius allowed on all sharp corners
- Values denoted by [X.XXX] are in inches

Nominal surface area = 3,98 cm<sup>2</sup> [0,617 inch<sup>2</sup>]

Rubber Formulation: 4023/50 grey

**West**

Revision Nb. 3

Unlimited dimensions ISO 3302, Part 1 Class M 3

Replacement for:

Replaced by:

Scale: 5:1

drawn:

Czi

22/FEB/2021

approved:

23/FEB/2021

J. Lencz

a

see change control 2020-193

T.Czich.

22/FEB/2021

Index

Modification:

Name:

Date:

**FluroTec - Injection Stopper**

**1358 4023/50 G**

Article Nb.:

**1358**

THE INFORMATION ON THIS DRAWING IS PROPRIETARY.  
 THIS INFORMATION SHALL NOT BE DISCLOSED, REPRODUCED IN ANY FORM OR USED FOR ANY PURPOSE,  
 WITHOUT PRIOR WRITTEN CONSENT OF WEST PHARMACEUTICAL SERVICES.