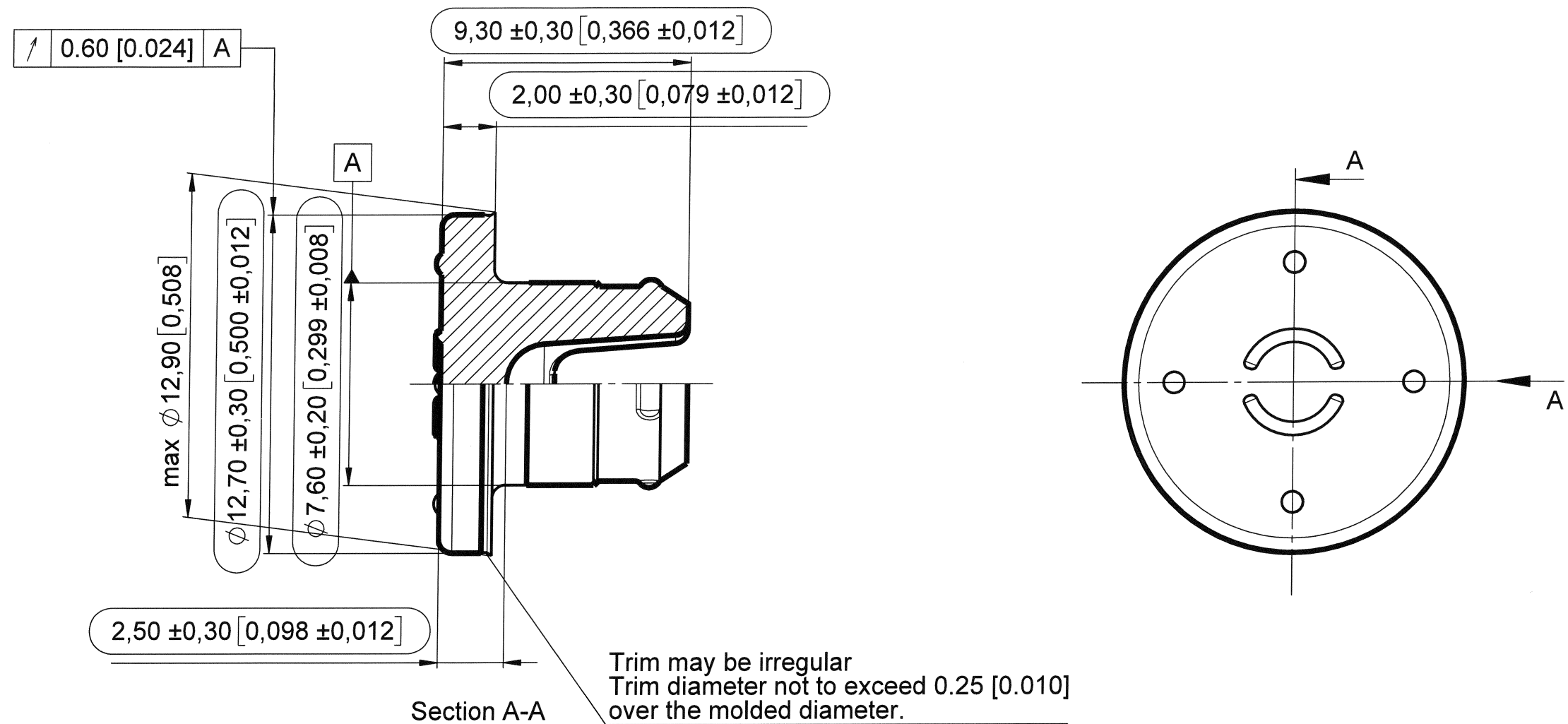




THICK LINE INDICATES FLUROTEC FILM COVERAGE



Notes:

- Drawing may be not to scale
- 0.1-0.15 [0.004-0.006] radius allowed on sharp corners
- Values denoted by [X.XXX] are in inches
- Nominal surface area = 5,26 cm² [0,815 inch²]

Rubber Formulation: 4023/50 grey				<div>West</div>						
Revision Nb. 4										
<div><div>.</div><div>.</div><div>.</div></div>	<div><div>.</div><div>.</div><div>.</div></div>	<div><div>.</div><div>.</div><div>.</div></div>	<div><div>.</div><div>.</div><div>.</div></div>	Unlimited dimensions ISO 3302, Part 1 Class M 3						
<div><div>.</div><div>.</div><div>.</div></div>	<div><div>.</div><div>.</div><div>.</div></div>	<div><div>.</div><div>.</div><div>.</div></div>	<div><div>.</div><div>.</div><div>.</div></div>	Replacement for: 1356 from 28.04.08		Replaced by: N/A				
<div><div>.</div><div>.</div><div>.</div></div>	<div><div>.</div><div>.</div><div>.</div></div>	<div><div>.</div><div>.</div><div>.</div></div>	<div><div>.</div><div>.</div><div>.</div></div>	Scale: 5:1	drawn:	Czi	08/APR/21	approved:	09/APR/21	
<div><div>.</div><div>.</div><div>.</div></div>	<div><div>.</div><div>.</div><div>.</div></div>	<div><div>.</div><div>.</div><div>.</div></div>	<div><div>.</div><div>.</div><div>.</div></div>	13mm LYO						Article Nb.:
a	Change Control 200000789	Czichowski	08/APR/21	1356 4023/50 G						1356
Index	Modification:	Name:	Date:							
THE INFORMATION ON THIS DRAWING IS PROPRIETARY. THIS INFORMATION SHALL NOT BE DISCLOSED, REPRODUCED IN ANY FORM OR USED FOR ANY PURPOSE, WITHOUT PRIOR WRITTEN CONSENT OF WEST PHARMACEUTICAL SERVICES.										