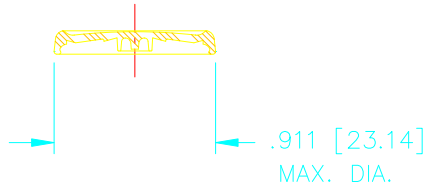
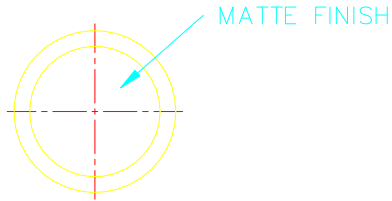
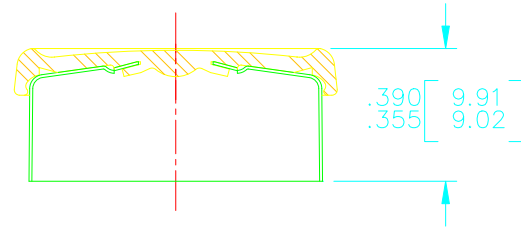


ALUMINUM SEAL
MAT'L: .008 ±.001 [.20 ±.02]

CAVITY MARKING IS POSSIBLY VISIBLE WHEN LOOKING ON THE INNER ALUMINUM SHELL SURFACE.



PLASTIC BUTTON



ASSEMBLED 2/1

NOTE: VALUES DENOTED BY [X.XX] ARE IN MILLIMETERS.

				<i>C. Whitson</i>	20 JUL.'00
B	14 APR 2020	SAP 200019511	HG FJM	<i>A. D. Knight</i>	21 JUL.'00
A	OCT'00	ECN#10276,(CHANGED NAME TO MATTE TOP BUTTON WAS D-I-D BUTTON)	CLW EK	<i>E. C. Keirstead</i>	21 JUL.'00
				<i>A. D. Knight</i>	21 JUL.'00
				N/A	21 JUL.'00
				N/A	21 JUL.'00

20mm 6 BRIDGES FLIP OFF
TruEdge® SEAL
MATTE TOP BUTTON

1:1 OR
AS NOTED SEE ABOVE