



By your side
for a healthier world™



ID Adapter

A Solution for Easier Intradermal Injection

The Intradermal (ID) Adapter is a novel injection guide designed for use with 1mL staked needle disposable syringes. The ID Adapter can help make ID injection easier and more consistent by guiding the angle and limiting the depth of needle insertion.

Features of the ID Adapter:

- Consists of a sterile, disposable, single-use, injection-molded part
- Snaps on to a 1mL staked needle disposable syringe with one-half inch needles (27, 28, 29 gauge)
- Guides the angle and limits the depth of needle penetration into the intradermal layer
- Utilizes current drug/vaccine vial and commercially available syringes, minimizing disruptions to current clinical practice

Benefits of the ID Adapter:

- Provides for consistent ID injections
- Convenient and easy to use
- Minimal end-user training



To learn more about using the ID Adapter for your drug product or for information on any of West's delivery system technologies, contact West today or visit www.westpharma.com

West Pharmaceutical Services, Inc. 530 Herman O. West Drive | Exton, PA 19341

Indications for Use:

The Intradermal Adapter is an accessory to a 1 ml, ½ inch fixed-needle allergy syringe indicated for use as a guide for performing intradermal injections.

The ID Adapter is designed for use with disposable 1ml allergy syringes with ½" (27g), (28g), (29g) needles.

Note: The Intradermal Adapter is sterile and non-pyrogenic unless package is damaged or open. Do not use if not intact. Before handling the components, wash your hands with soap and hot water. Place all items on a clean, flat and steady surface.

Procedural steps

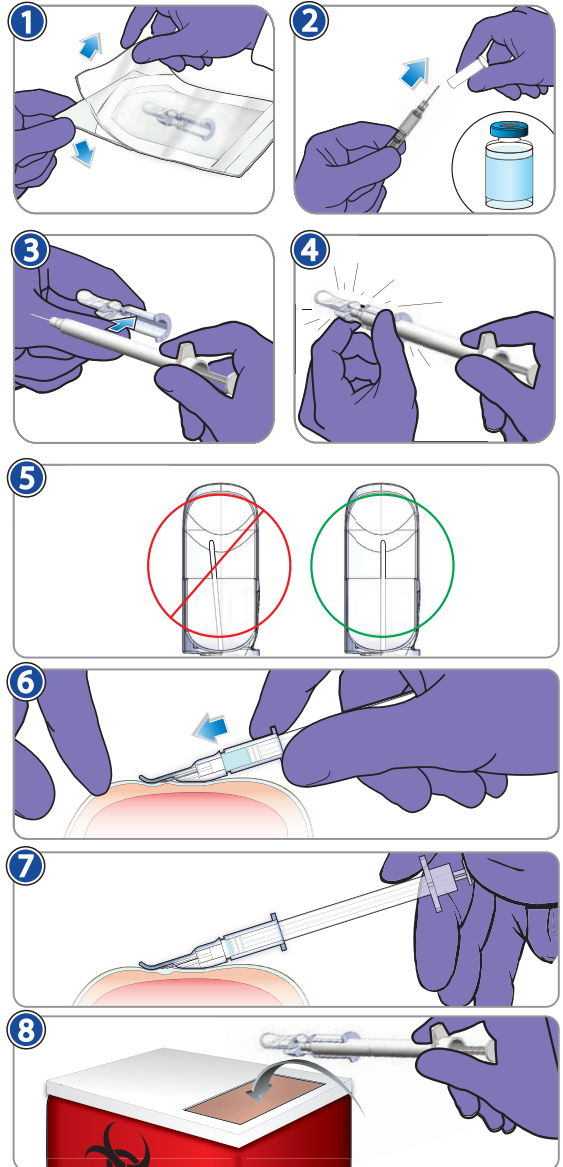
■ Prepare injection site using standard practice.

- 1 Open sterile pouch.
- 2
 - 2a - Remove tip cap from standard, disposable 1mL allergy syringe.
 - 2b - Withdraw recommended intradermal dose from vial taking care not to bend the needle.
- 3 Merge syringe with sterile adapter.
Caution: Use caution during assembly to avoid accidental needle stick.
- 4 Confirm full merge with audible/tactile snap, then ensure the syringe is pushed fully forward within the adapter.
Note: Syringe barrel must be fully forward in the adapter for proper injection.
- 5 Visually inspect and confirm needle is centered within the viewing window. If not, rotate the syringe 1/4 turn or until centered. (Bevel direction does not affect injections with the adapter)
- 6
 - 6a - Pull skin taught with one hand at injection site.
 - 6b - Place adapter on the skin with the exposed needle shaft parallel to and touching the skin.
 - 6c - With slight downward pressure, slide the assembly forward until the exposed part of the needle (viewed through the clear window) disappears beneath the skin.
- 7
 - 7a - Slowly administer the injection. The appearance of a small wheal or blister, indicates the dose has been delivered correctly intradermally.
 - 7b - Upon completed injection, wait 3-5 seconds and remove needle slowly; (a small drop of leakage is normal).
- 8 Discard the entire syringe/adapter in an approved sharps container.

Precautions:

- Do not use if package is damaged or open.
- Use caution during assembly of the Intradermal Adapter to avoid accidental needle stick.
- Single Use Only. The Intradermal Adapter is intended to be used for one patient. DO NOT reuse device.
- Re-sterilization may damage the device.
- Dispose of used device in accordance with applicable regulations.

**Intradermal (ID) Adapter
Instructions for Use**



West Pharmaceutical Services Inc. | 14677 N. 74th Street | Scottsdale, AZ 85260-2403 | PH: (480) 281-4500

Federal (USA) law restricts this device to sale by or on the order of a physician. WP06TDC00019, rev-004

STERILE EO Non-Pyrogenic Rx Only

For more information visit www.westpharma.com

West Pharmaceutical Services, Inc. | 530 Herman O. West Drive, Exton, PA 19341

North America +1 800-345-9800 | Europe +49 2403 7960 | Asia Pacific +64 6862 3400